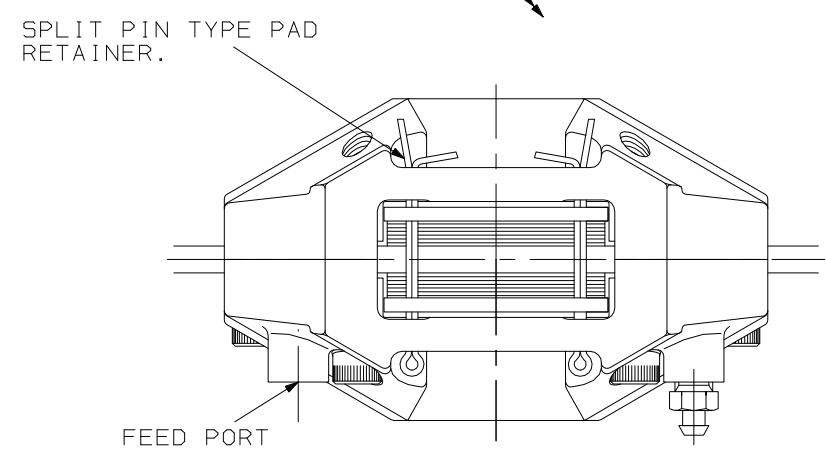
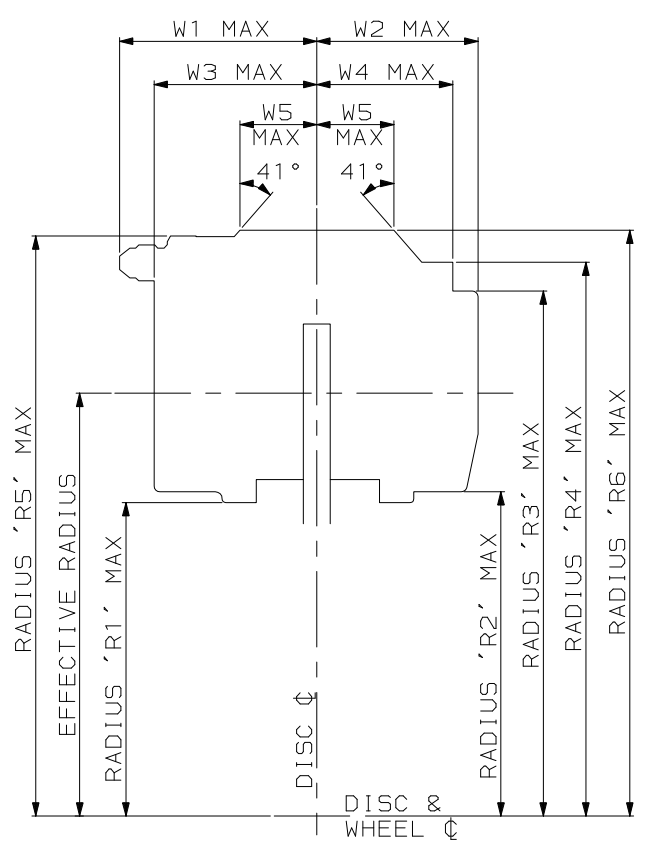
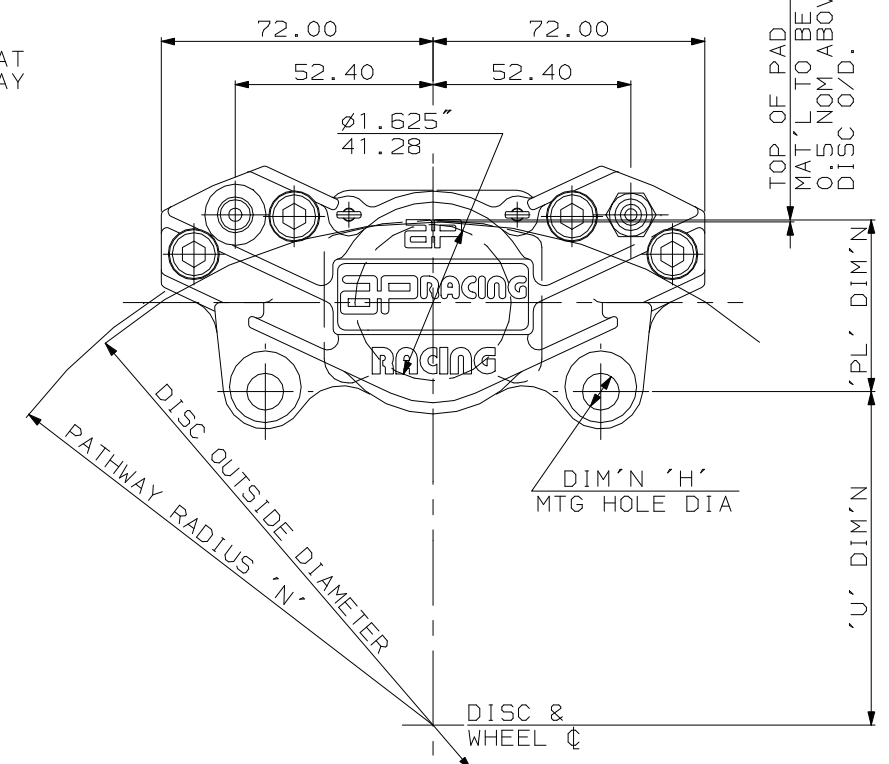
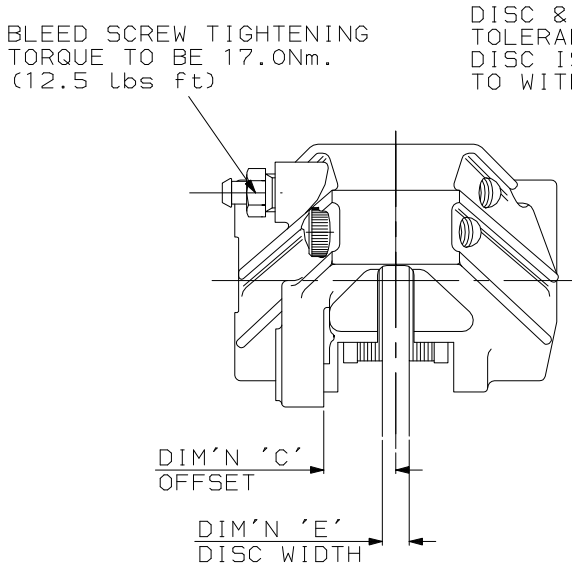
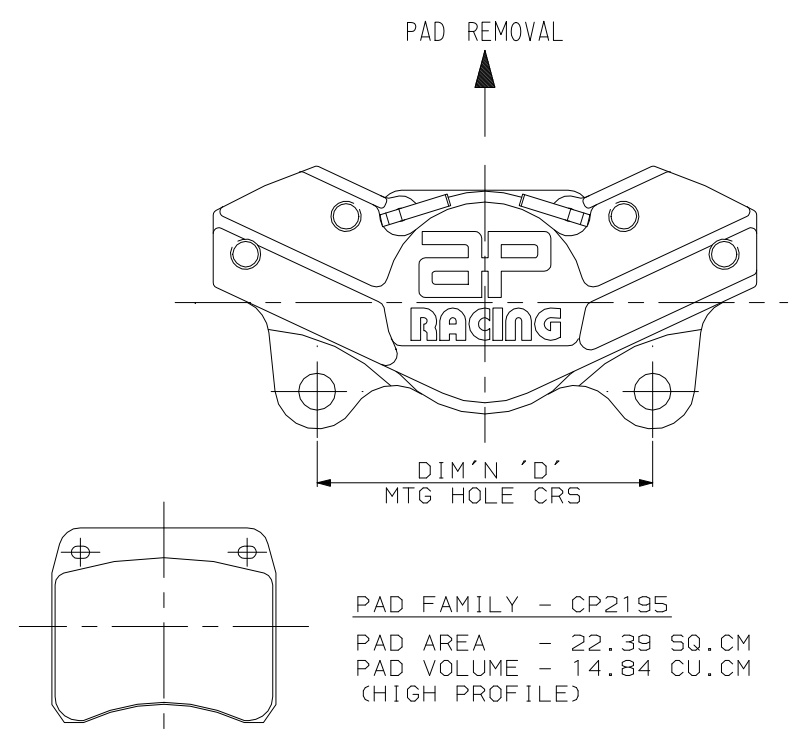


ISSUE NO.	ALTERATIONS		CHKD
	DATE & NO.	PARTICULARS	
1	14/07/94 B0000714	FIRST ISSUE	SY
2	30/08/94	ALL REFERENCE TO LEFT HAND CALIPER DELETED.	SY
3	02/02/98	(H10) DIM'N 'R1' DLTD.	SY
4	07/07/98	BLEED SCREW TORQUE WAS 5.5Nm, NOW 17.0Nm	RB
5	22/03/01 B2966	FORD LABEL DELETED. AP RACING LABEL ADDED. REFERENCE TO PISTON REMOVAL DELETED. INLET ADAPTOR DELETED	DA



CALIPER IS HANDED BY POSITION OF BLEED & FEED ONLY.

CALIPER ASSY FAMILY No	STROKE No	DISC DIA Ø	DISC WIDTH DIM'E	DIMN 'C'	DIMN 'H'	DIMN 'D'	DIMN 'PL'	RAD 'N'	REMARKS & APPLICATIONS
CP3696	6	266.7	7.11	19.10	10.20 10.10	88.95 88.85	45.50	135.1	FORMULA FORD

**GENERAL DESCRIPTION.**  
 THIS IS A TWIN OPPOSED BORE CALIPER DESIGNED TO OPERATE ON A SOLID IRON DISC FROM Ø9.42" (239.2) TO Ø12.6" (320.0) OF THICKNESS 0.28" (7.11).  
 TYPICAL APPLICATIONS- FORMULA FORD  
 PISTON DIAMETER 2 X 1.625" (41.28)  
 TOTAL PISTON AREA 26.76 SQ.CM (4.148"SQ.)  
 BODY MATERIAL ALUMINIUM ALLOY  
 ALL HYDRAULIC THREADS 3/8" UNF  
 PISTON MATERIAL ALUMINIUM ALLOY (STANDARD)

**DETAILS**  
 DIMENSION 'PL' TOP OF PAD MATERIAL TO MOUNTING HOLE Ø.  
 DIMENSION 'C' OFFSET - DISC CENTRE LINE TO CALIPER MOUNTING FACE.  
 DIMENSION 'D' MOUNTING HOLE CENTRES.  
 DIMENSION 'H' MOUNTING HOLE DIAMETER.  
 DIMENSION 'U' WHEEL CENTRE TO CALIPER MOUNTING HOLE Ø.  
 RADIUS 'N' RADIUS OF DISC PATHWAY EFFECTIVE RAD. RAD FROM WHEEL Ø TO NOM PISTON Ø

AP RACING TECHNICAL SECTION WILL BE PLEASED TO ADVISE ON THE MOST SUITABLE EQUIPMENT FOR ANY PARTICULAR APPLICATION.

**CALIPER PART NO. SELECTION**  
 1. SELECT ASSEMBLY FROM TABLE.  
 2. SELECT SUFFIX CHARACTERS AS FOLLOWS :-  
 1st CHARACTER - DENOTES POSITION OF INLET ADAPTOR. 'S' SIDEFEED, 'E' ENDFEED  
 2nd CHARACTER - DENOTES THE LOAD OF ANTI-KNOCKBACK SPRINGS FITTED.  
 '0' - NO SPRINGS  
 '4' - 4lb (17.8N) SPRINGS  
 3rd CHARACTER - DENOTES ALTERNATIVE PISTON MAT'L  
 'L' - STEEL

EXAMPLE PART NUMBER - CP3696-6E0  
 THE CORRECT PAD FAMILY NUMBER FOR THIS CALIPER IS CP2195. PADS SHOULD BE ORDERED SEPARATELY. A WIDE VARIETY OF MATERIALS ARE AVAILABLE:- PLEASE CONTACT A.P. RACING FOR ADVICE.

CALIPER RADIAL PROFILE TO SCALE FOR 266.7 DIA. DISC

	DISC Ø	EFF RAD	RAD 1	RAD 2	RAD 3	RAD 4	RAD 5	RAD 6	W 1	W 2	W 3	W 4	W 5
CP3696-6E0	Ø266.7 (10.5")	112.00	82.0	84.9	139.1	146.7	153.5	155.2	52.8	42.7	43.1	36.0	20.4

TEST

UNLESS OTHERWISE STATED:  
 DIMENSIONAL TOLERANCES ±0.25  
 ANGULAR TOLERANCES ±0°30'  
 MAX SURFACE FINISH: BY ANY METHOD  
 ON MACHINED SURFACES  
 WITHOUT MATERIAL REMOVAL

DIMENSIONS IN MILLIMETERS. DRAWING TO B.S. 308. THREADS TO B.S. 3643 PT2 (MEL110). REMOVE BURRS.

TITLE

SHEET SIZE A1  
 SCALE 1:1  
 TRANSLATION SHEET NO(S)  
 SHEET NO. 1 OF 1

MATERIAL
MATERIAL SPECIFICATION(S)
TREATMENT
DRAWN S. YOUNG CHECKED #
RE-DRAWN CHECKED
FINAL APPROVAL
TITLE Ø1.625" X2 CALIPER INSTALLATION
PART NO. CP3696-6E0
GROUP PART NO. #